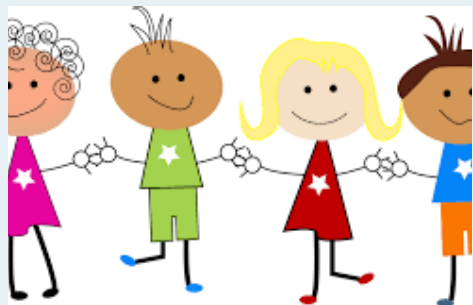


## Parent Groups

---

*FONPS—Friends of Nantucket Public School* The organization of parents, teachers and community members whose purpose is to promote quality education for the children of Nantucket's public schools

*SNAC—Special Needs Advisory Council* SNAC is an organization of families, teachers, and community members which supports and promotes the quality of education for students with diverse learning needs and challenges



Pathways Preschool & OutReach  
Kim Albertson and Jody Newman  
30 Surfside Road  
Nantucket, MA 02554  
508-228-7290

February 2017

## Early childhood Island Resources

---



*Created by  
Kim Albertson & Jody Newman  
Updated 2/2017*



## Why a resource?

**Early childhood** is the most rapid period of **development** in a human life. Although individual children develop at their own pace, all children progress through an identifiable sequence of physical, cognitive, and emotional growth and change.

The emotional, social and physical development of young children has a direct effect on their overall development and on the adult they will become. That is why understanding the need to invest in very young children is so important, so as to maximize their future well-being.

Knowing how to access quality programs of all different styles of learning can help increase the success of the young child, this brochure was created in hopes to have a common resource that is accessible for all families., including families who suspect developmental delays.

## Getting Connected

Nantucket is unique in it's location as well as it's resources. This is a small list of resources that are specific to the Early Childhood population for reference.

Use the many connections provided here as well as the local physicians to locate some of the programs that are offered on Nantucket.

Scholarships are often available through the programs if it is tuition based, and many are offered at no cost.

[Best connections with concerns for developmental delays ages Birth to 3 is :](#)

Cape & Islands Early Childhood Intervention  
Cape Cod Child Development  
83 Pearl Street, Hyannis, MA 02601

Linda Stiles, Director or Phyllis Donovan, Adm. Asst.  
508-775-6240 or 800-974-8860 bpeaton@cccdp.org  
www.cccdp.org Early Intervention program

[Best Connection with concerns for developmental delays after 3 years old:](#)

The Pathways Program,  
Nantucket Elementary School  
30 Surfside Road, Nantucket, MA 02554  
Sheilah Reardon, Direct of Special Education, 508-228-7280 or

Kim Albertson, educator albertsonk@nps.k12.ma.us  
Jody Newman, educator newmanj@nps.k12.ma.us

## Web connections

### Pathways OutReach Program

<http://www.npsk.org/education/staff/staff.php?sectionid=262&>

### Early Intervention

<http://www.accessnantucket.org/providers/cape-islands-early-childhood-intervention-program/>

### Community Foundation for Nantucket

[http://cfnan.org/wp-content/uploads/091412Children\\_000.pdf](http://cfnan.org/wp-content/uploads/091412Children_000.pdf)

### Nantucket STAR program

<http://nantucketstar.com/welcome/>

### Nantucket Community School

<http://nantucketcommunityschool.org/early-childhood/information-resources>

### Autism Resource Center

<https://www.autismspeaks.org/family-services/nantucket-autism-speaks-resource-center>

### Family & Children Services of Nantucket

<http://nantucketfamilyservices.org/>

### Nantucket Atheneum Children's Programs

<http://www.nantucketatheneum.org/programs-events/for-children/>

### Nantucket Community Music Center

<http://nantucketcommunitymusiccenter.org/>

